

Pitot Tube

The Brass Pitot Tube is a reliable tool for measuring water pressure at discharge points in irrigation systems. It pairs perfectly with pressure gauges to ensure uniform irrigation by providing accurate pressure readings. Designed for troubleshooting pressure issues, the pitot tube offers smooth flow with minimal pressure drop and comes in two models: straight and bend tube options.



HIGHLIGHTS

- **Connection Type:** 1/4" Female BSP/NPT threaded connection & 1/4" male BSP/NPT threaded connection for the Adapter.
- **Model Options:** Available in straight tube (S) and bend tube (B) designs.
- **Max Operating Pressure:** 10 Bar (145 Psi).
- **Material:** Solid brass construction for durability and long-lasting use.
- **Precision Measurement:** Ideal for measuring pipeline pressures with smooth flow.
- **Minimal Pressure Drop:** Ensures accurate readings without impacting system pressure.

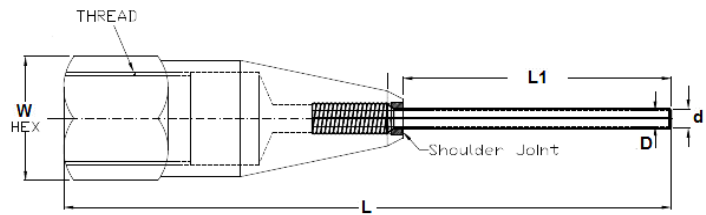
APPLICATIONS

- **Irrigation System Troubleshooting:** Helps diagnose pressure-related issues in irrigation pipelines.
- **Accurate Pressure Monitoring:** Measures the velocity of moving water for precise pressure adjustments.
- **Sprinkler Systems:** Used to monitor pressure at discharge points for consistent and uniform irrigation.
- **Easy Operation:** Attach to a pressure gauge and position near the sprinkler's stream to get accurate pressure readings.



Pitot Tube

Dimensions mm		
	1/4" S	1/4" B
W	15.87	15.87
L1	34	24
L	77	67
d	2	2
D	3	3



Part No	Part Name
1	Pressure Adopter Body
2	Grommet
3	Pressure Adopter Cap

